



# ADDENDUM

ESTA

KNITTING & CROCHET

MAGAZINE 57



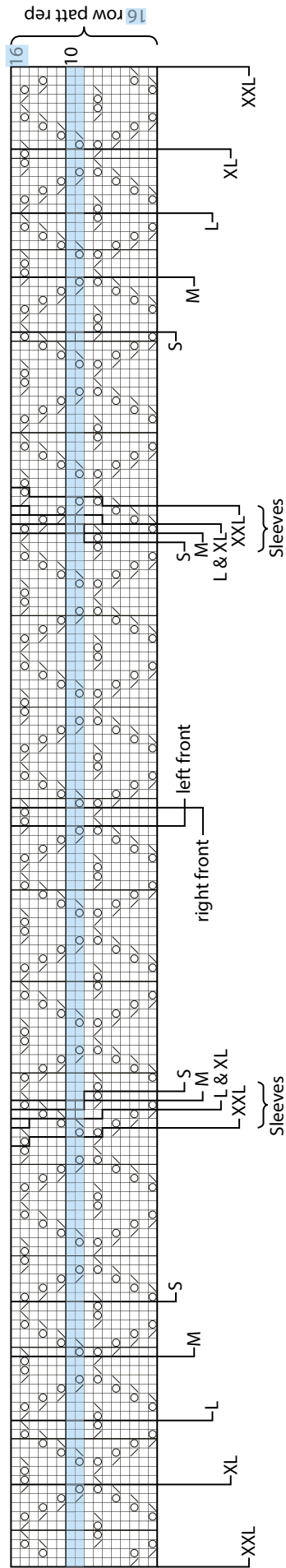
Chart Amend.

BACK

Change to 4mm (US 6) needles.

Beg and ending rows as indicated and repeating the [16 row](#) patt repeat throughout, cont in patt from chart as folls:

- key
- K on RS, P on WS
  - K2tog
  - s11, K1, pss0
  - yfwd



R O W A N

Unfortunately a pattern error has occurred, we apologise for any inconvenience that this may have caused

[www.knitrowan.com](http://www.knitrowan.com)  
[mail@knitrowan.com](mailto:mail@knitrowan.com)